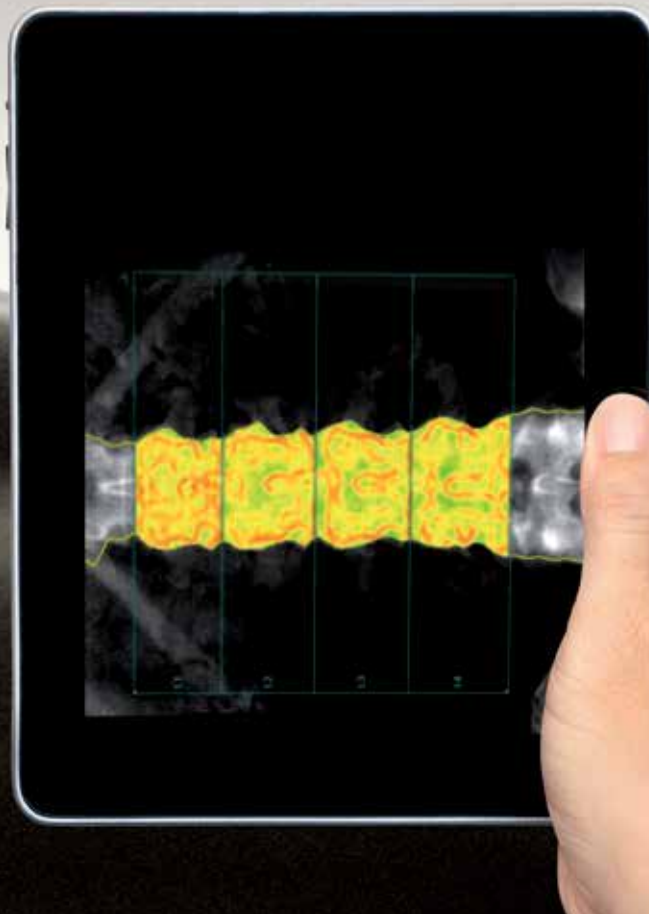


# Expand the view

1 click away from BMD examination, TBS brings the microarchitectural dimension for a better osteoporosis management



**TBS iNsight®**, the unique DXA application to access bone microarchitecture in routine clinical practice: TBS – Trabecular Bone Score – is measured directly from DXA images. Right at the end of the BMD exam, get the TBS in one click and 3 seconds. You now have the opportunity to integrate microarchitecture in your fracture risk evaluation. TBS is the missing link in osteoporosis diagnosis, fracture prognosis and patients' follow-up. Improve patient care by combining BMD and TBS – using the highest standard technology in your daily practice.

# In 3 seconds...

for a higher standard diagnosis

**50% of the overall fractured patients have got a T-score > -2.5; TBS allows the identification of patients with a high risk of fracture who were misclassified by BMD alone.**

**TBS iNsight® application for DXA device:**

- Stand alone software fully integrated on the DXA device
- From PA Spine DXA examination
- With no additional examination time nor radiation dose
- In 3 seconds
- Automatic TBS analysis of DXA scans
- Automatic creation of a TBS report & follow-up report
- European & American Normative Reference curves
- Possible retrospective analysis of past DXA scans
- Easy Data Export
- Software available in English, French, German, Italian and Spanish
- Compatibility with the following DXA devices:
  - Hologic: QDR 4500, DEPLHI, DISCOVERY
  - GE Lunar: Prodigy and iDXA
  - Operating Systems: Windows XP (SP2), Vista, Seven





## Medimaps group: innovative know-how in medical services

Founded in 2006 by specialists in densitometry and bone microarchitecture, Medimaps group offers practitioners quick and easy-to-use technologies to facilitate the diagnosis and personalized care of patients. The first product developed by Medimaps group, TBS iNsight®, is easily installed onto most running bone densitometers, as well as onto almost every new-generation densitometer.

Numerous publications on the importance of TBS assessment and its use in routine clinical practice are available on the website [www.tbsinsight.com](http://www.tbsinsight.com)

Medimaps group is ISO 13 485 certified.

**TBS iNsight®** is FDA cleared and CE marked.



18 chemin des Aulx,  
CH-1228 Plan-les-Ouates (Geneva) – Switzerland

*Tel.* +41 22 884 86 44

*E-mail.* [contact@medimapsgroup.com](mailto:contact@medimapsgroup.com)

*Web.* [www.medimapsgroup.com](http://www.medimapsgroup.com)

